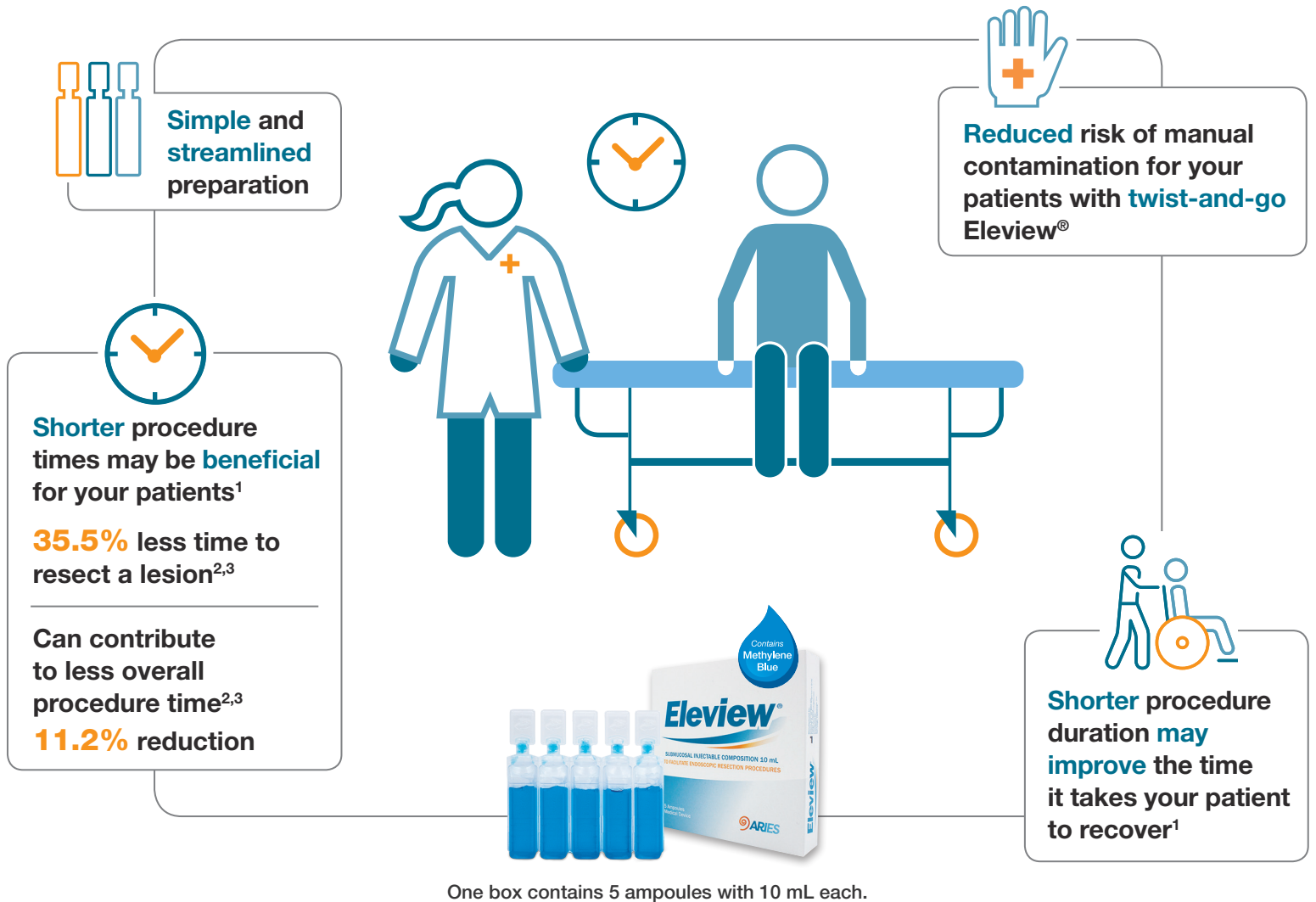


Focus on patient care with ready-to-use Eleview®



Important Safety Information

Eleview® submucosal injectable composition is intended for use in gastrointestinal endoscopic procedures for submucosal lift of polyps, adenomas, early-stage cancers, or other gastrointestinal mucosal lesions, prior to excision with a snare or endoscopic device.

WARNINGS AND PRECAUTIONS

- The endoscopist injecting Eleview® must be experienced in the administration technique.
- The safety of Eleview® has not been established in pregnant or lactating women, or in children under 18 years of age.

Please see Instructions for Use for complete Important Safety Information.

Lift that lasts
Eleview®

Deliver reliable lift and consistent performance



Important Safety Information

CONTRAINDICATIONS

Patients with known sensitivity to any of the components contained in Eleview®.

ADVERSE REACTIONS

Rarely, local bleeding and/or inflammatory reaction could occur which may or may not be associated with Eleview®.

References:

1. Feldheiser A, Aziz O, Baldini G, et al. Enhanced Recovery After Surgery (ERAS) for gastrointestinal surgery, part 2: consensus statement for anaesthesia practice. *Acta Anaesthesiol Scand*. 2016;60(3):289-334. 2. Data on File, Aries Pharmaceuticals, Inc. 3. Wallace M. Endoscopic removal of polyps in the gastrointestinal tract. *Gastroenterol Hepatol*. 2017;13(6):371-374. 4. Rex DK, Wallace M, Hassan C. A randomized double-blind trial of a new injectable solution (SIC 8000) for endoscopic resection of large sessile polyps of the colon: an interim report. Abstract presented at: Digestive Disease Week®, May 6-9, 2017; Chicago, IL. 5. Eleview® Instructions for Use, Aries Pharmaceuticals, Inc. April 2017.

Please see Instructions for Use for complete Important Safety Information.